

ROC Cabinetry Closet Catalog



Closet Series

Discover the perfect balance of style, function, and organization with our premium walk-in closet systems.

Whether you are seeking a sleek modern look or timeless elegance, our customizable designs bring order and luxury to your wardrobe space.



Soft White
CSW



Ashton Oak
CAO



Slate Oak
CSO

Specifications:

- Closet Panels: ¾" P2 furniture-grade Melamine Particle Board with ABS edge banding on the Sides, Rails, Top and Bottom panels; 3/8" melamine board for the back panels.
- Drawers: ¾" P2 furniture-grade Melamine Particle Board with ABS edge banding for a clean, durable finish.
- Drawer Glide: Full-extension, soft-close, under-mount slides for smooth and quiet operation.
- Accessories: Premium aluminum components for added durability and a modern look.
- Structure: Durable cam lock assembly for secure and efficient installation.



1	Toe Kick: D=3/4", H=3" P2-grade particle board.
2	Bottom Panel: D=3/4" P2-grade particle board, quick-assembly cam lock + wooden dowel connection.
3	Big Drawer: Drawer front height 12-5/8", Drawer depth 11-13/16", Soft-Close, Undermount slides.
4	Small Drawer: Drawer front height 6-1/4", Drawer depth 11-13/16", Soft-Close, Undermount slides.
5	Shelf: D=3/4" P2-grade particle board, 2-in-1 shelf support.
6	Shoe Rack: D=3/4" P2-grade particle board with aluminum trim on the front edge; supported by 2-in-1 shelf supports.
7	Back Panel: D=3/8" P2-grade particle board.
8	Hanging Rod: Aluminum alloy base, aluminum rod with PVC anti-slip strip, surface finished with water-based paint.
9	Top Panel: D=3/4" P2-grade particle board, quick-assembly cam lock + wooden dowel connection.
10	Rails: D=3/4", H=3" P2-grade particle board.
11	Left Panel: D=3/4" P2-grade particle board, 15-5/8" depth.
12	Right Panel: D=3/4" P2-grade particle board, 15-5/8" depth.

Closet Kit

How We Package:

Each basic closet frame consists of 3 cartons; each assigned a unique SKU; Closet products are sold by component kits only:

- **Example:** To pick up a complete Kit of C1884F, you need to have checked 3 component kits together.

SKU Example for KIT-C1884F:

Closet Color-
Ashton Oak

-CAO- 1884 TB-SH-HW

Size Code:
18"W, 84"H

CTN 1: Top & bottom panel*1 +
fixed shelf*1 + enforced rail*3 +
TK*1 + basic hardware*1.

-CAO- 1884 BP

CTN 2:
Back panel*1.

-CAO- 15 5/8" D-SP

CTN 3: Universal Left & right-side
panels for all standard Closet
Frames.



ROC Cabinetry is TSCA Title VI compliant signifying that our products have met the EPA's requirement of reduced exposure to formaldehyde emissions from certain wood products imported into the United States.





Standard Closet Frame kit

C1884F ~ C3684F

Width= 18" ~ 36"

Depth= 15-5/8"

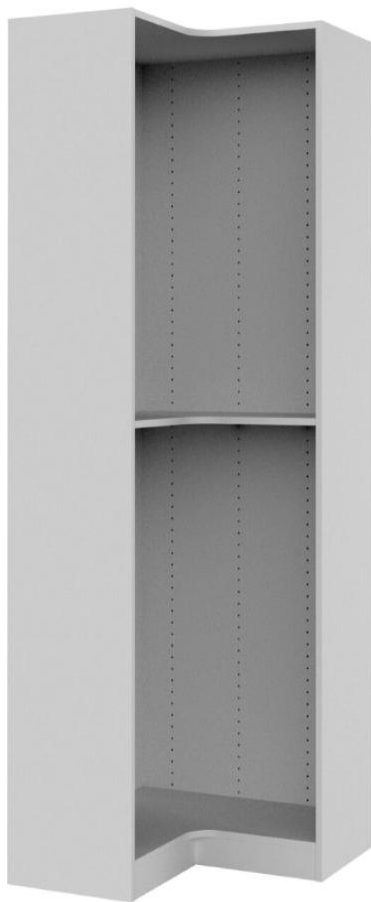
Height= 84"

Note:

- Clothes hanging rails, adjustable shelves, and drawers can be added as needed.
- 30" and 36" width closets can be equipped with functional hardware.

***Each basic closet frame consists of 3 cartons; each assigned a unique SKU; Closet products are sold by components (SKU) only.

	Package & Components	SKU	W	D	H
CTN 1	Top & bottom panel*2 + fixed shelf*1+ enforced rail*3 + TK*1 + basic hardware*1	1884TB-SH-HW	18"	15-5/8"	84"
		2484TB-SH-HW	24"	15-5/8"	84"
		3084TB-SH-HW	30"	15-5/8"	84"
		3684TB-SH-HW	36"	15-5/8"	84"
CTN 2	Back panel*1	1884BP	18"	3/8"	84"
		2484BP	24"	3/8"	84"
		3084BP	30"	3/8"	84"
		3684BP	36"	3/8"	84"
CTN 3	Left & right-side panels*2	15-5/8" D -SP	15-5/8"	3/4"	84"



Easy Reach Closet kit

ER3084 ~ ER3684

Width= 30" ~ 36"

Depth= 15"

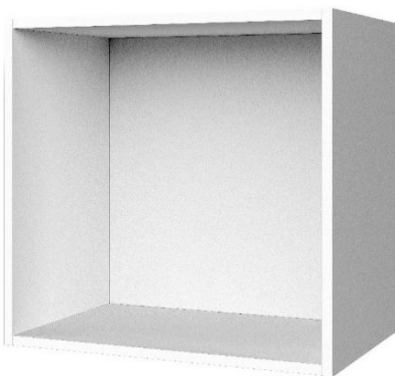
Height= 84"

Note:

- Clothes hanging rails, adjustable shelves can be added as needed.

***Each basic closet frame consists of 3 cartons; each assigned a unique SKU; Closet products are sold by components (SKU) only.

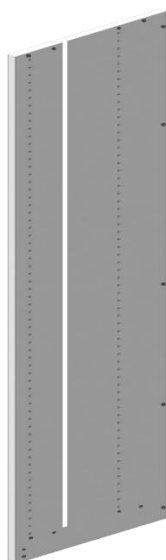
Package & Components:		SKU	W	D	H
CTN 1	Top & bottom panel*2 + fixed shelf*1+ TK*2 + basic hardware*1	ER3084TB-SH-HW	30"	15"	84"
		ER3684TB-SH-HW	36"	15"	84"
CTN 2	Back panel*2	ER3084BP	30"	3/4"	84"
		ER3684BP	36"	3/4"	84"
CTN 3	Left & right-side panels*2	ER-SP 15D"	15"	3/4"	84"



Quarter Hang Cabinets

SKU	W	D	H
C3621	36"	15-5/8"	21"

Note: Use a quarter-hang cabinet to fill the gap at the end, and a filler to cover the remaining space.
1 Set/CTN



Standard LED Side Panels

SKU	W	D	H
15 5/8" D-SP-LED	15-5/8"	3/4"	84"

Note:

****Left & right-side panels with LED lighting*1/CTN.**

Optional upgrade for 15-5/8" depth standard unit, needs to be ordered together with Touch Switch Shelf and Joint Control Box.



Easy Reach LED Side Panels

SKU	W	D	H
ER 15" D SP-LED	15"	3/4"	84"

Note:

****Left & right-side panels with LED lighting*1/CTN.**

Optional upgrade for 15" depth easy reach unit, needs to be ordered together with Touch Switch Shelf and Joint Control Box.

Drawer Kits

Small Drawer Kits 18" ~ 36"



SKU	Drawer Box			Drawer Face	
	W	D	H	W	H
DK18S	18"	12"	3-3/4"	18"	6-5/16"
DK24S	24"	12"	3-3/4"	24"	6-5/16"
DK30S	30"	12"	3-3/4"	30"	6-5/16"
DK36S	36"	12"	3-3/4"	36"	6-5/16"

Note:

**Include box and slides, suitable for 15^{5/8}" depth section unit. 1Set/CTN*



Big Drawer Kits 18" ~ 36"

SKU	Drawer Box			Drawer Face	
	W	D	H	W	H
DK18B	18"	12"	7-9/16"	18"	12-5/8"
DK24B	24"	12"	7-9/16"	24"	12-5/8"
DK30B	30"	12"	7-9/16"	30"	12-5/8"
DK36B	36"	12"	7-9/16"	36"	12-5/8"

Note:

**Include box and slides, suitable for 15^{5/8}" depth section unit. 1Set/CTN*

Adjustable Shelves

Standard Shelves 18" ~ 36"



Note:

** Adjustable shelf compatible with 15^{5/8}" depth units. Code number refers to fit width.
1PC/CTN*

SKU	W	D	H
S18	16-1/2"	14-1/2"	3/4"
S24	22-1/2"	14-1/2"	3/4"
S30	28-1/2"	14-1/2"	3/4"
S36	34-1/2"	14-1/2"	3/4"



Shelves With Touch Switch & Wire Duct 18" ~ 36"

SKU	W	D	H
S18- Touch Switch	16-1/2"	14-1/2"	3/4"
S24- Touch Switch	22-1/2"	14-1/2"	3/4"
S30- Touch Switch	28-1/2"	14-1/2"	3/4"
S36- Touch Switch	34-1/2"	14-1/2"	3/4"

Note:

Shelf for corresponding width, 15^{5/8}" depth section unit, needs to be ordered together with LED side panels and Joint Control Box. 1PC/CTN



Easy Reach Shelves 30" ~ 36"

SKU	W	D	H
S30ER	28-1/2"	14-1/4"	3/4"
S36ER	34-1/2"	14-1/4"	3/4"

Note:

** Adjustable shelf compatible with 15" depth easy reach units. Code number refers to fit width. 1PC/CTN*

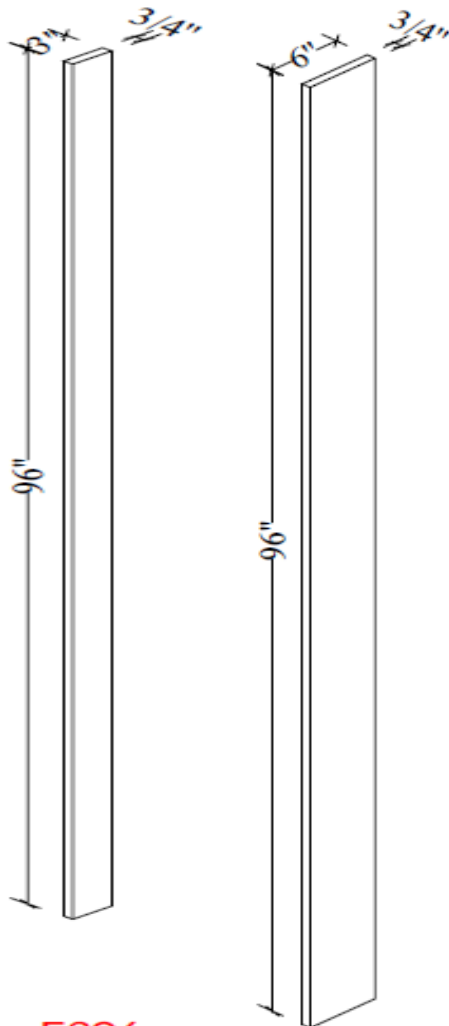


Shoe Shelves 24" ~ 36"

SKU	W	D	H
SS24	22-1/2"	14-1/2"	3/4"
SS30	28-1/2"	14-1/2"	3/4"
SS36	34-1/2"	14-1/2"	3/4"

Note:

* Shoe shelf with front bar, tilt install in 15
5/8" depth sections, 2 Sets/CTN



F396

F696

Tall Fillers

SKU	W	D	H
F396	3"	3/4"	96"
F696	6"	3/4"	96"

Accessories

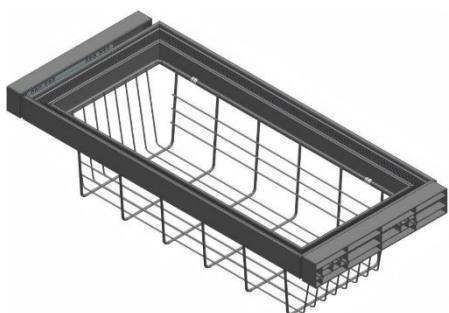


Hanging Rods

SKU	W
CA-HR18	18"
CA-HR24	24"
CA-HR30	30"
CA-HR36	36"

Note:

** Code number refers to fit width.*



Basket Racks

SKU	W	D
CA-BSK30	30"	13-5/8"
CA-BSK36	36"	13-5/8"

Note:

** Fit for 30" and 36" width section units.*

**Basket Rack with soft close slide.*

**Include box and slide, suitable for 15^{5/8}" depth section unit.*



Pants Racks

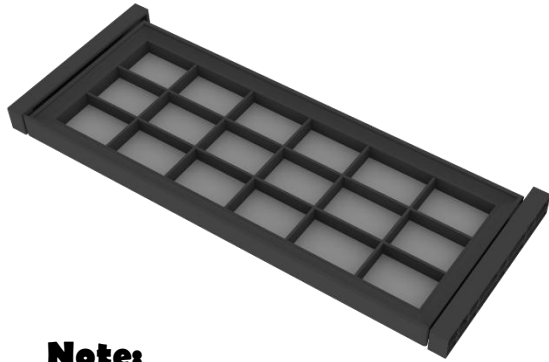
SKU	W	D
CA-PR30	30"	13-5/8"
CA-PR36	36"	13-5/8"

Note:

** Fit for 30" and 36" width section units.*

**Grey Pants Rack with soft close slide.*

**Include box and slide, suitable for 15^{5/8}" depth section unit.*



Tie Racks

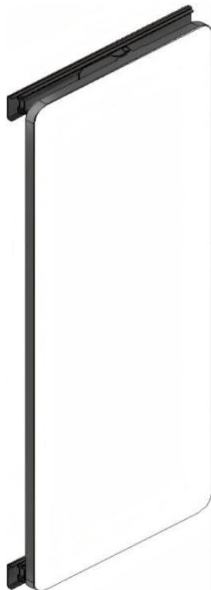
SKU	W	D
CA-TR30	30"	13-5/8"
CA-TR36	36"	13-5/8"

Note:

**Fit for 30" and 36" width section units.*

**Grey Tie Rack with soft close slide.*

**Include box and slide, suitable for 15^{5/8}" depth section unit.*



Mirror

SKU	W	H
CA-MIR1437	14"	37"

Note:

**Mirror with slide mount rack. 1PC/CTN*



Joint Control Box

SKU: CA-CJB

Note:

**Junction box, three terminals. 1PC/CTN*

(1 control 3 cabinet light switches, 2 control 5 cabinet light switches, 3 can control 7 cabinet light switches.)



Extension Cord

SKU: LED EXT-CORD

Note:

**Extension cord, connected to the light cord, length 1.8M. 1PC/CTN*



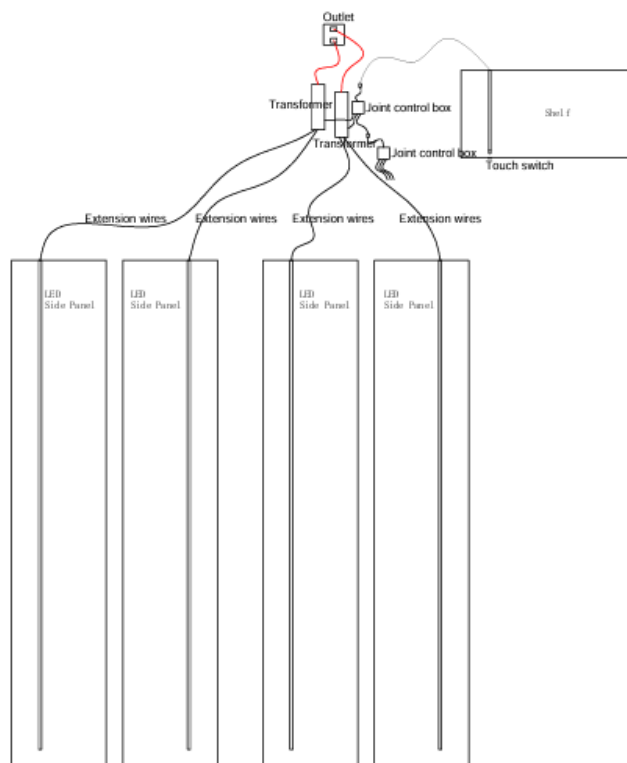
Transformer

SKU: XFM

Note:

**36W, 1 PC per single closet unit. 1PC/CTN*

△How to Install LED LIGHTING?



Step 1:
Connect LED LIGHTING to Transformer.
(Extension wires could be added when needed).

Step 2:
Connect Joint control box to Transformer.

Step 3:
Connect Touch switch to Joint control box.

SKU	MSRP	CSW	CAO	CSO
Closet Components				
15 5/8"D-SP	\$354.50	✓	✓	✓
1884TB-SH-HW	\$106.40	✓	✓	✓
1884BP	\$95.50	✓	✓	✓
2484TB-SH-HW	\$152.70	✓	✓	✓
2484BP	\$129.50	✓	✓	✓
3084TB-SH-HW	\$198.80	✓	✓	✓
3084BP	\$163.30	✓	✓	✓
3684TB-SH-HW	\$244.90	✓	✓	✓
3684BP	\$197.10	✓	✓	✓
ER-SP 15"D	\$331.80	✓	✓	✓
ER3084TB-SH-HW	\$233.50	✓	✓	✓
ER3084BP	\$727.90	✓	✓	✓
ER3684TB-SH-HW	\$479.90	✓	✓	✓
ER3684BP	\$763.70	✓	✓	✓
Adjustable Shelves & Fillers				
S18	\$43.60	✓	✓	✓
S24	\$60.30	✓	✓	✓
S30	\$72.30	✓	✓	✓
S36	\$80.90	✓	✓	✓
S18 Touch switch	\$129.60	✓	✓	✓
S24 Touch switch	\$156.30	✓	✓	✓
S30 Touch switch	\$168.30	✓	✓	✓
S36 Touch switch	\$176.90	✓	✓	✓
S30ER	\$120.20	✓	✓	✓
S36ER	\$175.80	✓	✓	✓
SS24	\$126.00	✓	✓	✓
SS30	\$146.00	✓	✓	✓
SS36	\$166.00	✓	✓	✓
F396	\$53.20	✓	✓	✓
F696	\$106.40	✓	✓	✓
ROC Cabinetry reserves the right to change the price at any time without prior notice.				

SKU	MSRP	CSW	CAO	CSO
Drawer Kits				
DK18S	\$156.90	✓	✓	✓
DK24S	\$177.10	✓	✓	✓
DK30S	\$197.20	✓	✓	✓
DK36S	\$217.30	✓	✓	✓
DK18B	\$217.30	✓	✓	✓
DK24B	\$249.90	✓	✓	✓
DK30B	\$285.20	✓	✓	✓
DK36B	\$320.50	✓	✓	✓

ACCRSSORIES	FLAT RATE
CA-HR18	\$16.80
CA-HR24	\$21.07
CA-HR30	\$25.34
CA-HR36	\$29.60
CA-PR30	\$73.32
CA-PR36	\$80.80
CA-BSK30	\$85.44
CA-BSK36	\$96.24
CA-TR30	\$85.20
CA-TR36	\$94.00
CA-MIR1437	\$50.40
CA-XFMR	\$51.20
CA-CJB	\$19.20
CA-LED EXT-CORD	\$5.00
Sample Door	\$10.00

ROC Cabinetry reserves the right to change the price at any time without prior notice.